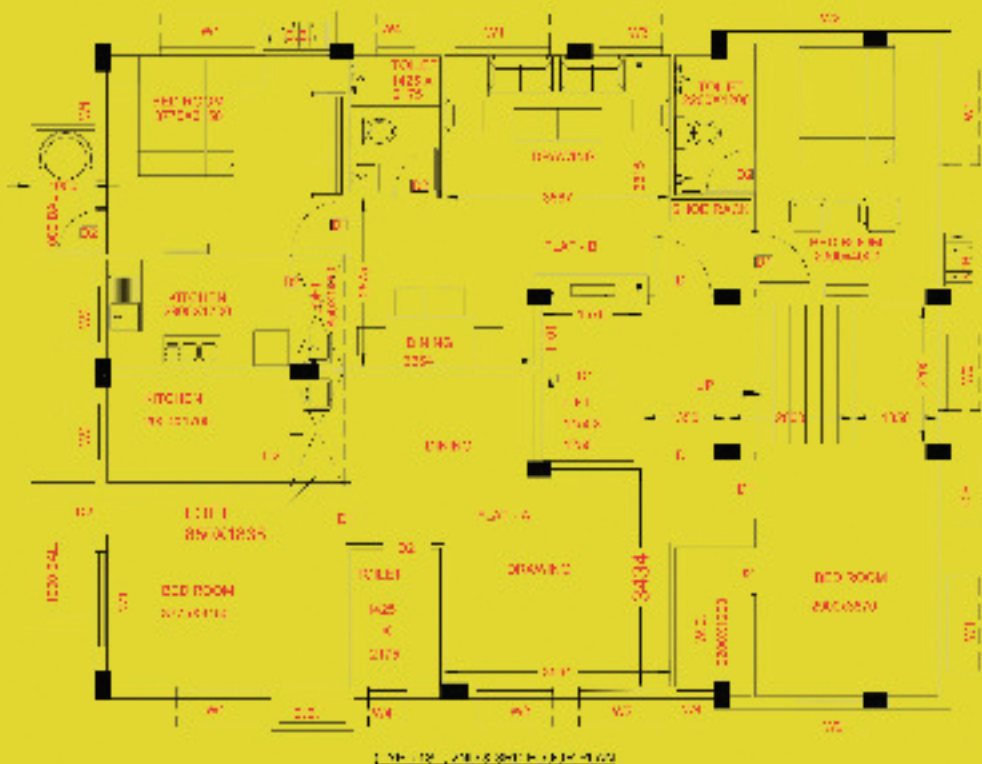


Survey Park Residency,

as the name denotes, is a abode in a green surrounding, sharing the common boundary wall with the Udira Coudeville, on E.M. By-Pass, the present life line of Kolkata. The location is surrounded by renowned Health, Education & Entertainment facilities with very easy proximity to all day-to-day needs and all available means of public transport including the upcoming New Garia - Airport Metro. Re-discover the meaning of true life in our thoughtfully crafted, affordable smart homes.



Specification

STRUCTURE

Earthquake-resistant RCC
Standard framework

FITTING

CP fitting as standard, brand
Steel sink of standard brand
European type commode &
basin of standard brand

WALL TILES

2 feet above the marble counter in kitchen
Up to door height in bath & wc

FLOORING

Bedrooms & Living room: Vitrified tiles
Kitchen: anti-slip tiles
Bath & WC: anti-slip tiles
Balcony: Vitrified tiles
Staircase & Terrace: Marble Stone tiles' kota

ELECTRICALS

All concealed wiring with ISI number wire
All standard switches of reputed brand
Free use for AC point in all rooms
Smokeless provision: Geyser, refrigerator, water purifier,
Washing Machine & Telephone point in each flat
TV point in living room & bedrooms

DOORS & WINDOWS

Doors - Flush door with spacer frame for
living room, all Bedrooms & Balcony
PVC door for all other areas in Bath & WC
Windows - Class-A Aluminum Sliding Jamb with glass

COMMON LIGHTING

Extended illumination with
passway lighting
Common Passage & Staircase
lighting to match door

FINISHING

External - elegant Weather Coat paint
Internal - wall paper including one coat putty



Facilities & Amenities

- Strategic Location •
- All Three side open flats •
- Aesthetically designed layout to maximize natural light and air flow •
- Minimal wastage of space inside the unit •
- Built-in Cupboard space in each bedroom •
- Earthquake resistant RCC Framed Super structure •
- Lift •
- Adequate Car Parking •
- Rooftop Landscaped Area with Meditation Deck, Party Zone & Sitting Area •
- Provision for Inverter point inside each unit •
- KMC filtered water supply •